

CATCH THE WAVE AS IT BUILDS



PRESENTING

SBI NIFTY200 MOMENTUM 30 INDEX FUND

NFO PERIOD : 23 JUNE - 03 JULY, 2025

SBI MF
PASSIVE SOLUTIONS
INDEX FUNDS | ETFs | FOFs



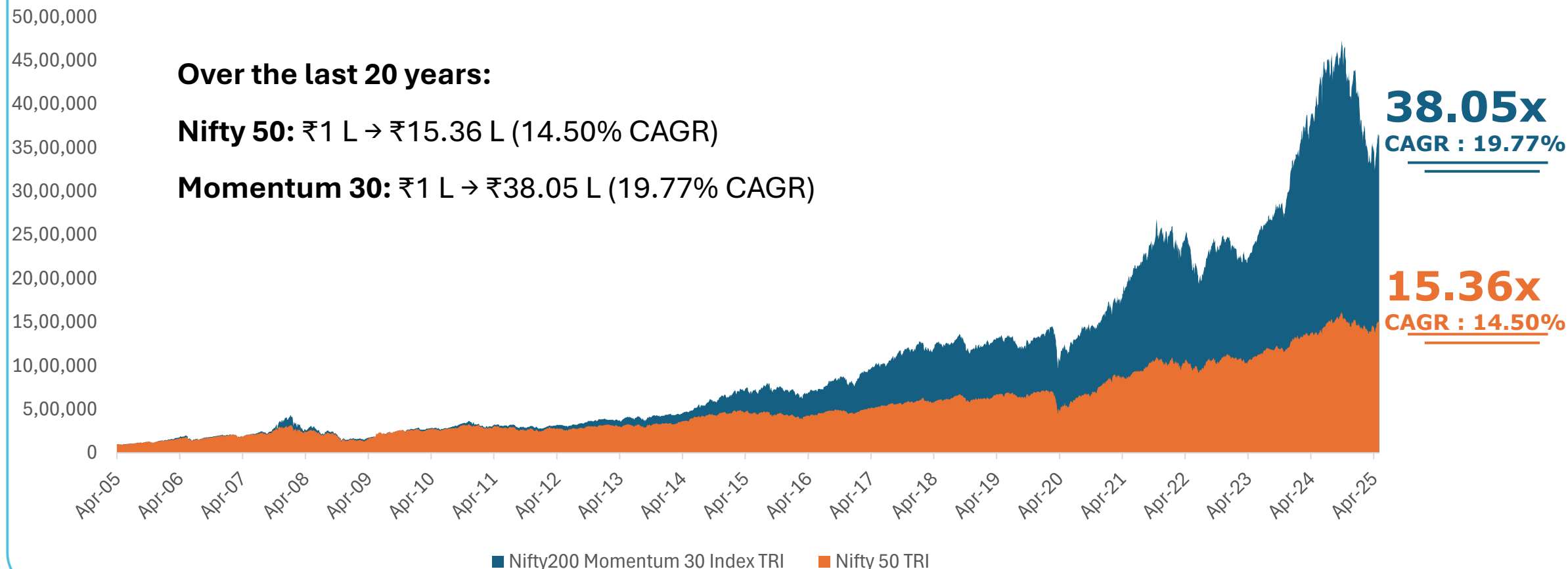
<p>Scheme Riskometer</p>  <p>RISKOMETER</p> <p>The risk of the scheme is Very High</p>	<p>An open-ended scheme replicating / tracking Nifty200 Momentum 30 Index</p> <p>This product is suitable for investors who are seeking[^]:</p> <ul style="list-style-type: none">• Long term capital appreciation• Investment in securities covered by Nifty200 Momentum 30 Index <p><small>[^]Investors should consult their financial advisers if in doubt about whether the product is suitable for them.</small></p>	<p>Benchmark Riskometer: Nifty200 Momentum 30 Index TRI</p>  <p>RISKOMETER</p> <p>The risk of the benchmark is Very High</p>
---	--	--

Mutual Fund investments are subject to market risks, read all scheme related documents carefully.

Scale of Outperformance : Nifty200 Momentum 30 Index Vs. Nifty 50



(Rebase to lakh)



Source : MFI explorer , Data for the period Apr 2005 – May 2025. The above is for illustration purpose only, It should not be construed to be indicative of scheme performance in any manner. Past performance may or may not be sustained in future.

Unveiling Momentum: NIFTY200 Momentum 30 Index



What is it?

The NIFTY200 Momentum 30 Index picks the top 30 stocks from the NIFTY 200 based on their Normalized Momentum Score.

01

Why choose it?

The Index actively adjusts to market shifts, focusing on stocks with strong recent performance.

Aims to generate long-term returns above the NIFTY 200 TRI over time.

02

When does it work?

During periods of consistent price trends, high-momentum stocks tend to continue performing well.

03

About Nifty200 Momentum 30 Index Methodology



**Universe / Parent
Index**

NIFTY 200

**Eligibility
criteria**

**Listed in derivatives
segment with a min. 1
Yr listing history**

**Stock selection
process**

**50% x 12-month Price
Return + 50% x 6-
month Price Return,
adjusted for volatility**

**Weights and
Capping**

**Stock weight \leq 5% or
5x its free-float index
weight, whichever is
lower**

Index Rebalance : Semi-annual (Jun and Dec)

Source: NSE Indices Limited. For detailed methodology, please visit www.niftyindices.com

SBI FUNDS MANAGEMENT LIMITED (A joint venture between SBI & AMUNDI)

SBI MF
PASSIVE SOLUTIONS
INDEX FUNDS | ETFs | FOFs

Factor Investing: Past Performance



Momentum: A Consistent Winner Across Market Cycles (1/2)



Mar-11	Mar-12	Mar-13	Mar-14	Mar-15	Mar-16	Mar-17	Mar-18	Mar-19	Mar-20	Mar-21	Mar-22	Mar-23	Mar-24	Mar-25
Value	Quality	Momentum	Quality	Momentum	Alpha	Value	Momentum	Nifty 50	Quality	Value	Alpha	Value	Value	Low Volatility
Nifty 50	Alpha	Alpha	Alpha	Alpha	Low Volatility	Alpha	Alpha	Quality	Low Volatility	Alpha	Momentum	Low Volatility	Alpha	Value
Low Volatility	Momentum	Low Volatility	Momentum	Quality	Momentum	Momentum	Quality	Low Volatility	Momentum	Momentum	Value	Nifty 50	Momentum	Nifty 50
Momentum	Value	Quality	Value	Low Volatility	Quality	Nifty 50	Low Volatility	Momentum	Alpha	Quality	Nifty 50	Quality	Low Volatility	Quality
Quality	Nifty 50	Nifty 50	Low Volatility	Nifty 50	Nifty 50	Low Volatility	Nifty 50	Alpha	Nifty 50	Low Volatility	Quality	Momentum	Quality	Alpha
Alpha	Low Volatility	Value	Nifty 50	Value	Value	Quality	Value	Value	Value	Nifty 50	Low Volatility	Alpha	Nifty 50	Momentum

Momentum investing consistently outperforms traditional indices and other strategies, delivering strong returns across market cycles. Its proven resilience makes it a smart choice for investors seeking long-term, trend-driven growth.

Source: MFI explorer, Data for the period Apr 2010 – Mar 2025. The above is for illustration purpose only, It should not be construed to be indicative of scheme performance in any manner. Past performance may or may not be sustained in future. Ordered by performance (best to worst) for each Financial Year. Source: MFI Explorer, Internal Research. Value = Nifty200 Value 30 TRI, Momentum = Nifty200 Momentum 30 TRI, Quality = Nifty200 Quality 30 Index TRI, Alpha = Nifty200 Alpha 30 TRI, Low Volatility = Nifty 500 Low Volatility 50 TRI

Momentum: A Consistent Winner Across Market Cycles (2/2)



Mar-11	Mar-12	Mar-13	Mar-14	Mar-15	Mar-16	Mar-17	Mar-18	Mar-19	Mar-20	Mar-21	Mar-22	Mar-23	Mar-24	Mar-25
22.3	11.8	16.5	29.8	60.2	-0.7	57.7	21.8	11.85	-15.6	97.2	42.4	15	88.2	8.1
16.19	0.3	11.7	23.5	57.6	-3.1	41	20.5	11	-12.8	64.8	37.7	8.4	85.4	6.8
14.1	-0.3	11.7	21	39.4	-4.4	40.2	17.8	10.6	-16.7	62.4	33.9	4.24	70.3	6.13
14.1	-2.1	10.9	18.5	38.1	-5.4	26.53	14	9.4	-17.4	56.8	18.12	-0.7	45.3	4.2
14.1	-2.73	7.32	17.6	33.66	-11.02	19.8	13.69	4.8	-18.32	55.9	17.8	-9.2	34.9	-4.7
6.6	-2.9	-13.1	17.23	25.1	-16.1	13.6	1.6	-5.5	-45.7	30.78	12.8	-9.4	27.03	-9

Quality	Momentum	Nifty 50	Value	Low Vol.	Alpha
---------	----------	----------	-------	----------	-------

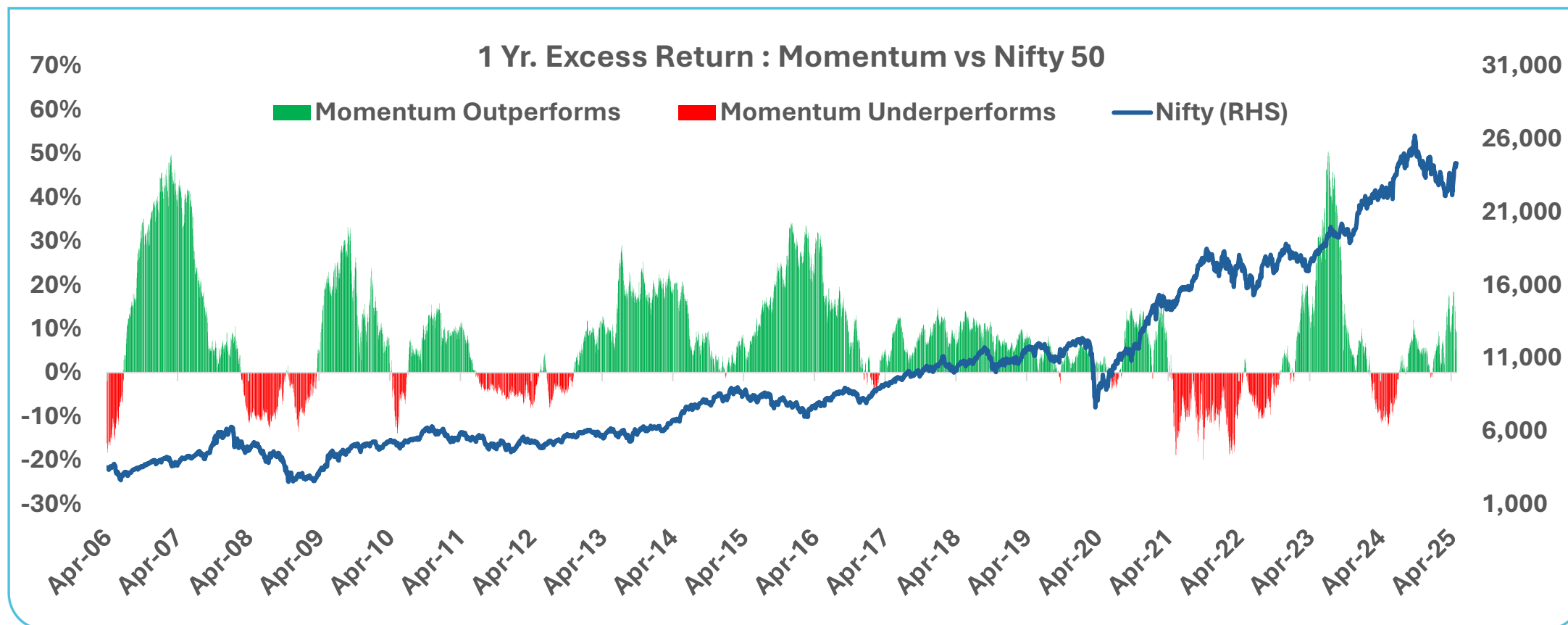
Min : -16.7 (Mar-20)	Max : 70.3 (Mar -24)	AVG : 20.93 (For 15 Yrs)
-------------------------	-------------------------	-----------------------------

Source : MFI explorer , Data for the period Apr 2010 – Mar 2025. The above is for illustration purpose only, It should not be construed to be indicative of scheme performance in any manner. Past performance may or may not be sustained in future. Ordered by performance (best to worst) for each Financial Year. Source: MFI Explorer, Internal Research. Value = Nifty200 Value 30 TRI, Momentum = Nifty200 Momentum 30 TRI, Quality = Nifty200 Quality 30 Index TRI, Alpha = Nifty200 Alpha 30 TRI, Low Volatility = Nifty 500 Low Volatility 50 TRI

Nifty200 Momentum 30 Index Performance



Nifty200 Momentum 30 Index Outperforms Nifty 50



Source MFI Explorer. Data as on May 30, 2025. 'Momentum' refers to Nifty200 Momentum 30 TRI, The chart denotes excess return generated by Nifty200 Momentum 30 TRI over Nifty 50 TRI on 1 Yr rolling return .

Nifty200 Momentum 30 TRI : Over the Years



Date	Nifty200 Momentum 30 TRI	Nifty 50 TRI
FY 06	80%	67%
FY 07	5%	14%
FY 08	41%	25%
FY 09	-35%	-35%
FY 10	63%	75%
FY 11	14%	12%
FY 12	0%	-8%
FY 13	16%	9%
FY 14	21%	19%
FY 15	60%	28%
FY 16	-4%	-8%
FY 17	40%	20%
FY 18	22%	12%
FY 19	12%	16%
FY 20	-16%	-25%
FY 21	62%	73%
FY 22	38%	20%
FY 23	-9%	1%
FY 24	70%	30%
FY 25	-8%	7%

Period	Annualised returns (%)	
	Nifty200 Momentum 30 TRI	Nifty 50 TRI
1 Year	-9.80	11.11
3 Years	20.39	15.56
5 Years	25.18	21.71
7 Years	17.26	14.02
10 Years	17.93	12.74
Since Inception	19.77	14.50

Does where you start matter?

- Momentum underperformed over last 1 yr (-9.8% vs. 11.1% for the Nifty 50)
- Momentum has outpaced Nifty 50 over longer horizons—(20.4% vs. 15.6% over 3 yrs, 19.7% vs. 14.5% since Inception)

Data for the period April 01, 2005 to May 31, 2025. Past performance may or may not be sustained in the future. Source: MFI Explorer; The above is for illustration purpose only, It should not be construed to be indicative of scheme performance in any manner.

Nifty200 Momentum 30 TRI: Rolling Returns



	Nifty200 Momentum 30 TRI	Nifty 50 TRI	Nifty200 Momentum 30 TRI	Nifty 50 TRI	Nifty200 Momentum 30 TRI	Nifty 50 TRI
Rolling Period	1 Year		3 Years		5 Years	
Average	20.5%	13.4%	18.2%	12.4%	18.56%	12.41%
Std. Deviation	27.10	21.98	8.95	6.77	6.45	4.72
Total Observation	4756		4258		3768	
Negative Return	19%	17%	3.0%	6%	0.9%	0.1%
0% - 6% Return	8.0%	11.8%	4.9%	14%	2.6%	11.1%
6% - 12% Return	5.2%	10.2%	18.3%	13%	12.4%	27.1%
12% - 18% Return	9.4%	14.5%	18.6%	29%	25.8%	51.2%
>18% Return	44.2%	28.5%	55.2%	24%	58.2%	10.5%

74%

84%

- **Consistent Outperformance:** Momentum strategy delivered over 12% returns in 74% of observations during 3-year periods, and in 84% of 5-year periods.
- **Growth Potential:** More than half the time, returns exceed 18% over both 3-year (55%) and 5-year (58%) periods.

Data for the period April 01, 2005 to May 30, 2025. Past performance may or may not be sustained in the future. Source: MFI Explorer The above is for illustration purpose only, It should not be construed to be indicative of scheme performance in any manner.

Nifty200 Momentum 30 TRI: SIP Returns



SIP Returns	1 Yr	3 Yrs.	5 Yrs.	7 Yrs.	10 Yrs.	15 Yrs.
Nifty 50 TRI	6.5	14.8	15.4	15.7	14.8	13.7
Nifty200 Momentum 30 TRI	-11.1	17.0	18.7	19.6	19.0	19.8
Excess Returns		2.2	3.4	3.9	4.2	6.1

The NIFTY200 Momentum 30 TRI outperforms the NIFTY 50 TRI, with excess returns increasing from 2.19% over 3 years to 3.38% over 5 years and 6.07% over 15 years, showcasing potential gains with longer investment horizons.

Data as on May 30, 2025 . SIP Performance is calculated using Total Return Index, with zero cost/expenses. Past performance may or may not be sustained in the future. Source: Mfl Explorer; The above is for illustration purpose only, It should not be construed to be indicative of scheme performance in any manner. The above are not scheme SIP returns, but simulation of index SIP returns. Past performance may or may not be sustained in future

About Nifty200 Momentum 30 Index



Composition of Nifty200 Momentum 30 Index



Company Name

Wtg. (%)

BHARTI AIRTEL LTD.	6.03
BHARAT ELECTRONICS LTD.	5.34
MAHINDRA & MAHINDRA LTD.	5.29
DIVI'S LABORATORIES LTD.	5.26
TECH MAHINDRA LTD.	5.06
BSE LTD.	5.04
SUN PHARMA. LTD.	4.8
ETERNAL LTD.	4.78
HCL TECHNOLOGIES LTD.	4.67
INFOSYS LTD.	4.4
PERSISTENT SYSTEMS LTD.	4.31
DIXON TECH. (INDIA) LTD.	4.16
TRENT LTD.	4.15
INDIAN HOTELS CO. LTD.	3.72
COFORGE LTD.	3.6

Company Name

Wtg. (%)

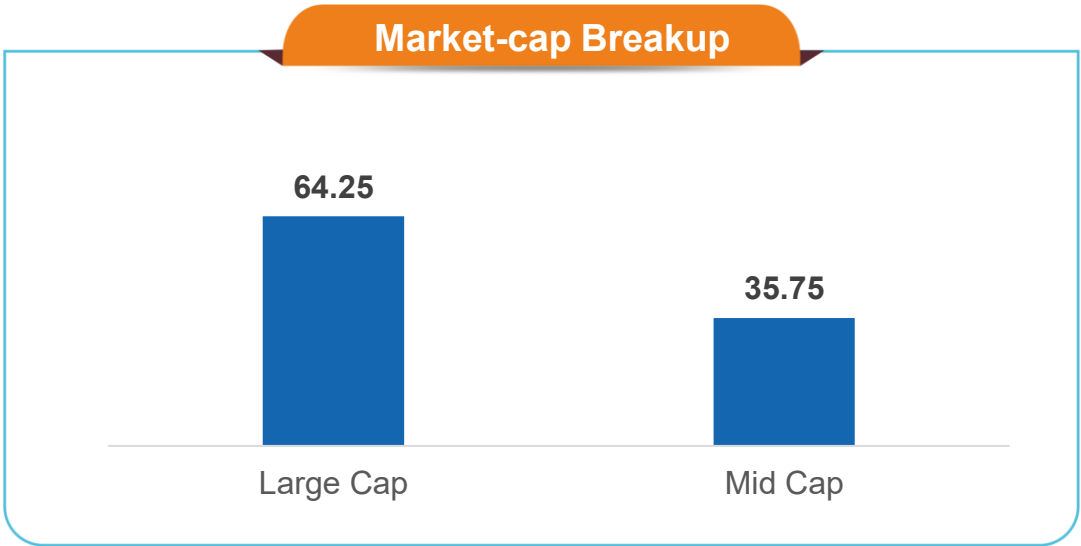
PB FINTECH LTD.	3.48
INFO EDGE (INDIA) LTD.	3.26
VEDANTA LTD.	5.29
LUPIN LTD.	5.26
SIEMENS LTD.	5.06
FEDERAL BANK LTD.	5.04
UNITED SPIRITS LTD.	4.8
SAMVARDHANA MOTHERSON INT. LTD.	4.78
ORACLE FIN SER. LTD.	4.67
KALYAN JEWELLERS INDIA LTD.	4.4
VOLTAS LTD.	4.31
TORRENT PHARMA LTD.	4.16
ONE 97 COMMUNICATIONS LTD.	4.15
BOSCH LTD.	3.72
OIL INDIA LTD.	3.6

Source www.niftyindices.com. Data as on June 13, 2025 .

Composition of Nifty200 Momentum 30 Index



Company Name	Wtg. (%)
Information Technology	22.95
Consumer Services	16.11
Healthcare	13.93
Financial Services	11.81
Automobile and Auto Components	8.09
Capital Goods	7.56
Consumer Durables	7.51
Telecommunication	6.18
Metals & Mining	2.63
Fast Moving Consumer Goods	2.23
Oil, Gas & Consumable Fuels	0.99



P/E	P/B	Dividend Yield
39.08	7.92	1.12

Source www.niftyindices.com. P/E: Price to Equity, P/B : Price to Book Data as on May 30, 2025.
Market Cap Representation is based on AMFI classification as on Dec 2024.

SBI Nifty200 Momentum 30 Index Fund

Product Labeling :

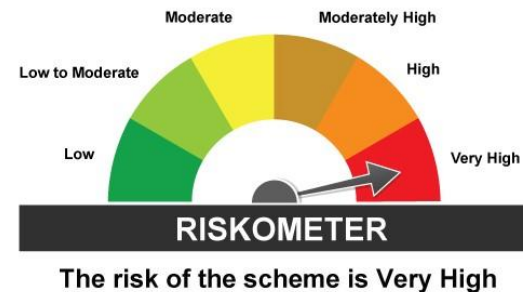
SBI Nifty200 Momentum 30 Index Fund is suitable for investors who are seeking*

- Long term capital appreciation
- Investment in securities covered by Nifty200 Momentum 30 Index

*Investors should consult their financial advisers if in doubt about whether the product is suitable for them.

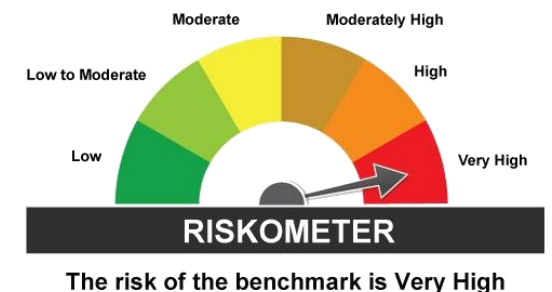
The above product labelling assigned during the New Fund Offer (NFO) is based on internal assessment of the scheme characteristics or model portfolio and the same may vary post NFO when the actual investments are made.

Scheme Riskometer

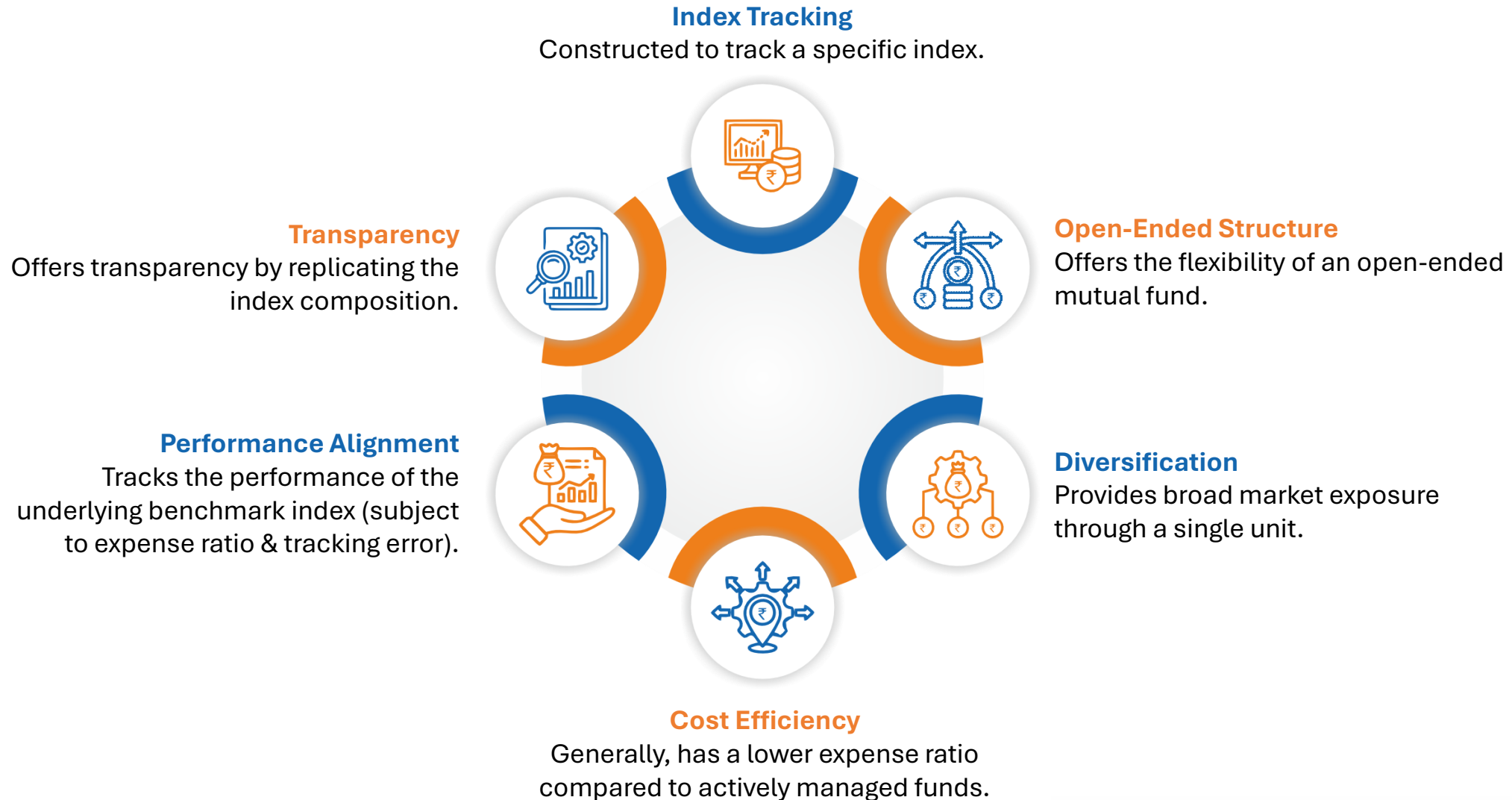


Benchmark Riskometer

Nifty200 Momentum 30 TRI



Benefits of Investing in an Index Fund



Why invest in SBI Nifty200 Momentum 30 Index Fund?



About SBI Nifty200 Momentum 30 Index Fund



Type of Scheme

SBI Nifty200 Momentum 30 Index Fund is an open-ended scheme replicating/tracking Nifty200 Momentum 30 Index



Investment Objective

The investment objective of the scheme is to provide returns that correspond to the total returns of the securities as represented by the underlying index, subject to tracking error. However, there is no guarantee or assurance that the investment objective of the scheme will be achieved.



Asset Allocation

Instruments	Indicative allocations (% of total assets)	
	Minimum	Maximum
Securities covered by Nifty200 Momentum 30 Index	95	100
Government Securities* including Triparty Repo, and units of liquid mutual fund	0	5

*Government securities includes G-Secs, SDLs, treasury bills.



For more details and detailed asset allocation, refer Scheme Information Document (SID).

SBI Nifty200 Momentum 30 Index Fund



Scheme Name

SBI Nifty200 Momentum 30 Index Fund



NFO Open Date

June 23, 2025

NFO Close Date

July 03, 2025



Plans & Options

Regular & Direct Plan; Both plans provide two options – Growth Option and Income Distribution cum capital withdrawal (IDCW) Option for “IDCW Re-investment” and “IDCW Pay-out” is available



Application Amount

Minimum Investment Amount : Rs. 5000/- and in multiples of Re. 1 thereafter;
Additional Purchase Amount: Rs. 1000/- and in multiples of Re. 1 thereafter



Benchmark

Nifty200 Momentum 30 TRI



Fund Manager

Mr. Viral Chhadva



Exit Load

For exit on or before 15 days from the date of allotment: 0.25%,
For exit after 15 days from the date of allotment: Nil

For additional details and queries related to subscription during & post NFO or Fund Asset Allocation, please refer to SID at <https://www.sbimf.com/>

SBI FUNDS MANAGEMENT LIMITED (A joint venture between SBI & AMUNDI)

SBI MF
PASSIVE SOLUTIONS
INDEX FUNDS | ETFs | FOFs



NSE INDICES LIMITED: DISCLAIMER for Nifty200 Momentum 30 Index

SBI Nifty200 Momentum 30 Index Fund (the Schemes) offered by SBI Mutual Fund is not sponsored, endorsed, sold or promoted by NSE INDICES LIMITED (formerly known as India Index Services & Products Limited (IISL)). NSE INDICES LIMITED does not make any representation or warranty, express or implied (including warranties of merchantability or fitness for particular purpose or use) and disclaims all liability to the owners of “the Schemes” or any member of the public regarding the advisability of investing in securities generally or in the “the Schemes” linked to Nifty200 Momentum 30 Index or particularly in the ability of Nifty200 Momentum 30 Index to track general stock market performance in India. Please read the full Disclaimers in relation to the Nifty200 Momentum 30 Index in the Offer Document / Prospectus / Information Statement, respectively.

This presentation is for information purposes only and is not an offer to sell or a solicitation to buy any mutual fund units/securities. These views alone are not sufficient and should not be used for the development or implementation of an investment strategy. It should not be construed as investment advice to any party. All opinions and estimates included here constitute our view as of this date and are subject to change without notice. Neither SBI Funds Management Limited, nor any person connected with it, accepts any liability arising from the use of this information. The recipient of this material should rely on their investigations and take their own professional advice. For complete details, refer Scheme Related Documents available on <https://www.sbimf.com/>

**Mutual Fund investments are subject to market risks,
read all scheme related documents carefully.**